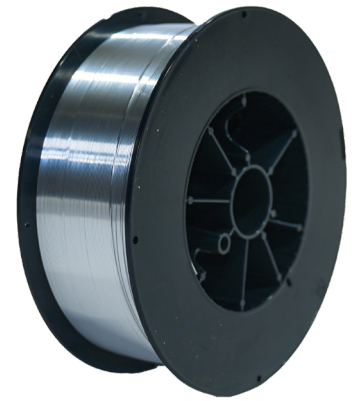


Alumi Glide® 4047 Aluminum Welding Wire

The Alumi Glide® 4047 Aluminum Welding Wire is a premium aluminum welding wire with 12% silicon. It is formulated to minimize the possibility of hot cracking during the welding process and features optimized metal flow for precise and controlled weld bead formation.

Its composition and properties make it highly resistant to cracking, which results in stronger and more reliable welds.



Manufacturing Advantages

- Low melting point and high fluidity
- Minimized hot cracking
- Lower shrinkage rate
- Excellent wetting action for joint sealing
- Exceptional mechanical properties and structural integrity
- Higher silicon content excellent fluidity to the weld pool
- Gas metal arc welding and gas tungsten arc welding
- Excellent for welding with 1XXX, 3XXX, 5XXX, 6XXX and 7XXX series alloys
- Improved corrosion resistance for welding in harsh environments
- Typical tensile strength of 27 KSI

Welding Positions

All-position MIG welding wire. Requires appropriate shielding gas usage, settings, and arc transfer modes.

Shielding Gas Blends

- 100% Argon
- Argon/Helium mixtures

Applications

- Agricultural Equipment
- Auto Body
- Automotive Exhaust
- General Fabrication
- Heavy Equipment
- Pipe Welding
- Pressure Vessels
- Railcars
- Shipbuilding
- Structures
- Trailers

Specifications

Meets or Exceeds:

- AWS A5.10 classification ER4047, R4047
- Canadian Bureau of Welding – CWB A5.10
- ISO 9001:2015
- Produced in Canada

Storage

Welding wire should be stored in a dry, enclosed environment and in its originally sealed package.



3602 North Perkins Road
Stillwater, OK 74075
Customer Service: 1-800-777-1618
www.NSARC.com



Alumi Glide® 4047

Aluminum Welding Wire

Typical Weld Metal Composition (Weight %)

	Al (Aluminum)	Mn (Manganese)	Fe (Iron)	Cu (Copper)	Be (Beryllium)	Si (Silicon)	Mg (Magnesium)	Cr (Chromium)	Ti (Titanium)	Zn (Zinc)	Other Elements
4043	Remainder	0.05 Max	0.80 Max	0.30 Max	0.0003 Max	4.5-6.0	0.05 Max		0.20 Max	0.10 Max	0.05 Max & Total 0.15 Max
4943	Remainder	0.05 (max.)	0.40 (max.)	0.10 (max.)	0.0003 (max.)	5.0-6.0	0.30-0.50		0.15 (max.)	0.10 (max.)	0.05 Max & Total 0.15 Max
5356	Remainder	0.05-0.20	0.40 (max.)	0.10 (max.)	0.0003 (max.)	0.25 (max.)	0.25 (max.)	0.05-0.20	0.06-0.20	0.10 (max.)	0.05 Max & Total 0.15 Max



3602 North Perkins Road
 Stillwater, OK 74075
 Customer Service: 1-800-777-1618
www.NSARC.com